

**SZEGED CONTEMPORARY DANCE COMPANY**  
***eARTh***  
**TECHNICAL RIDER**

*stage:*

- min. 12 x 18 m dance stage
- black dance floor
- black horizon (backdrop)
- min. 4 right & 4 left black legs (masking)
- 14 fly-bars (200 kg weight-carrying capacity)
- trestle-bridge with wheels, min 7 meter high

*lights what we need:*

- 74 pieces PAR64
- 41 pieces channels
- both side of the stage 1 – 1 63 amp daf tap
- 4 pieces 16 amp direct
- 2 pieces stativ with 4 pieces profil
- in the flying bars 24 pieces PAR64
- 9 pieces 2 KW PC

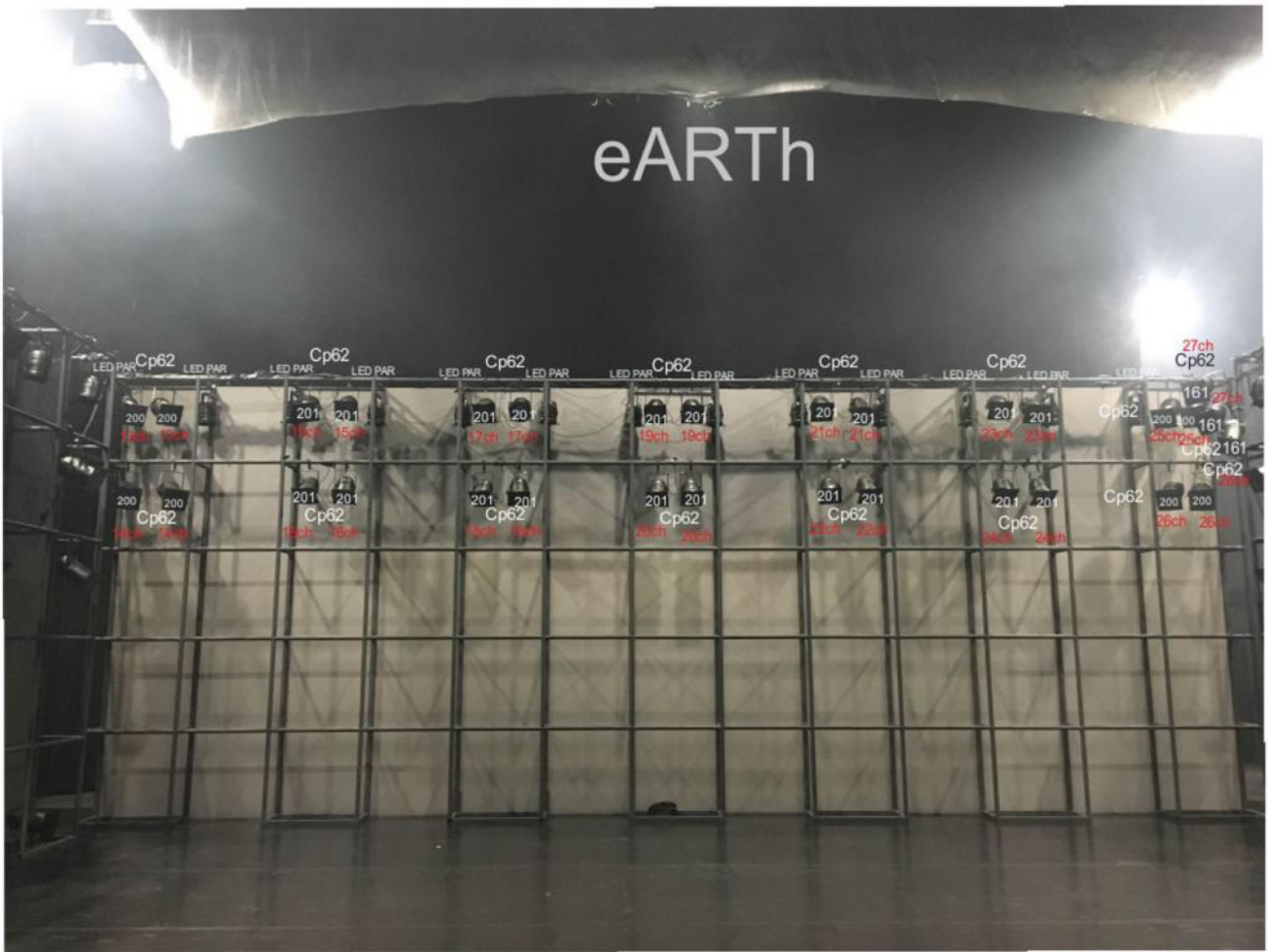
*sound:*

- CD player or computer
- control – system
- 1 piece glaciator heavy smoke on the balcony
- 2 pieces smoke machine on the stage
- 11500 illuminating power projector (wide-angle optic) 13 x 5 m opera foil

*dressing room with warm water:*

- for 8 women and 7 men and one for the technicians

# eARTh



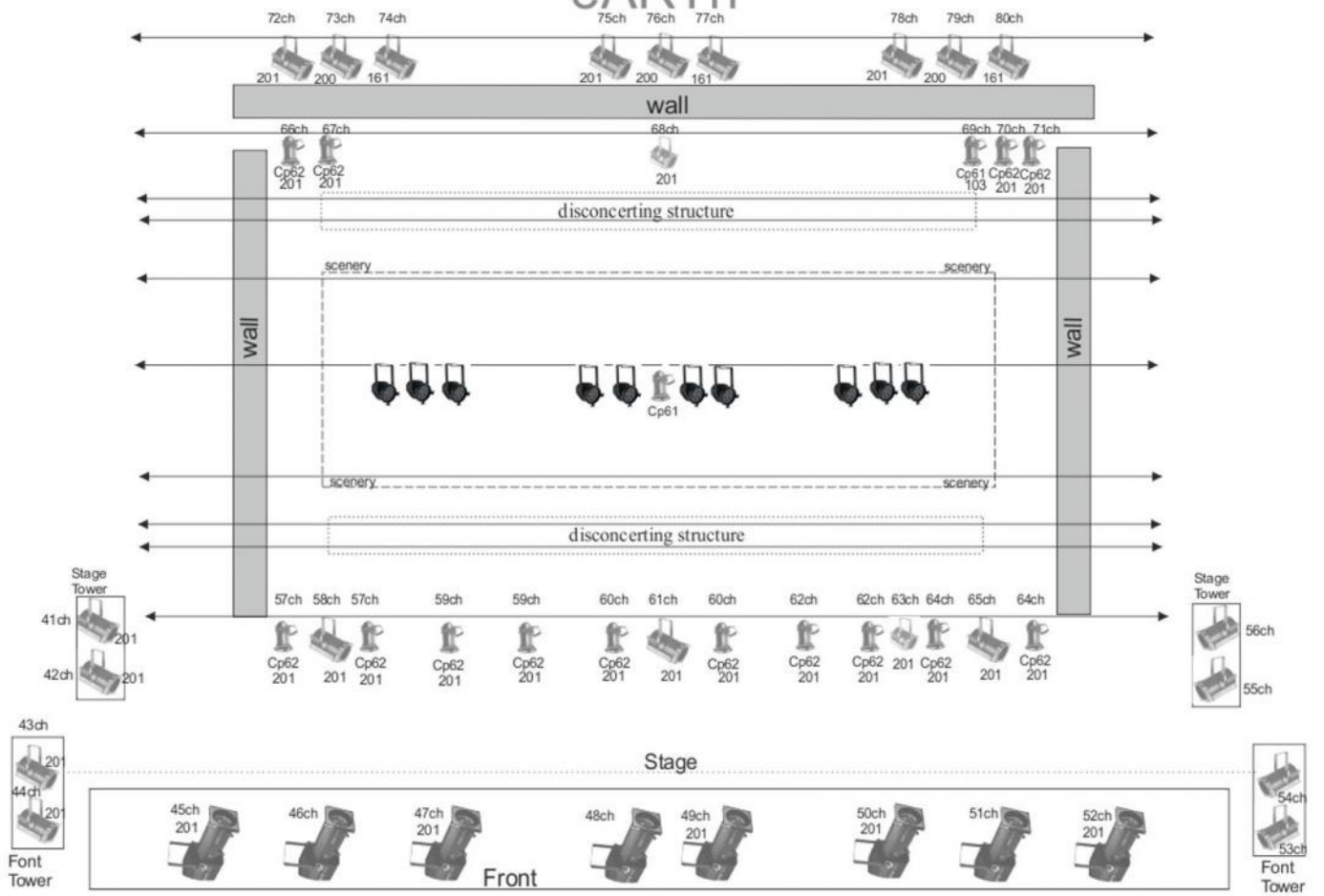
# eARTH



eARTh



# eARTH



## eARTH Legend



MDG CO fog



if not MDG then HASER fog machine



ZR-13 smoke machine



Street light/side light  
1KW profil/zoom

1KW profil/zoom



2KW profil zoom



2KW PC



1KW PC



LED PAR own



long black PAR 64 CP62/CP61



short black PAR 64/CP62

ch

channel

# eARTh Legend



MDG CO fog machine



if not MDG then HASER fog machine



ZR-13 smoke machine



street light/ side light  
1KW profil/zoom

1KW profil/zoom



MAC2000 Wash



MAC 2000 Performance



MAC700 vagy MAC550 spot



2KW profil zoom



2KW PC



LED PAR own



long black PAR 64 CP62/CP61



short black PAR 64/CP62

ch

channel